



ARCHITECTURAL PRODUCTS
Golterman & Sabo

Operable Wall Service ALL BRANDS

Movable Dividing Walls and Doors • Air-Walls • Folding Doors •
Accordion Doors • Movable Glass Walls

Repairs

Service

Parts

Preventive Maintenance

Recovery

Replacement

Factory trained and certified technicians can repair it

Quick response to your call or e-mail, up-front pricing

For your own maintenance crew

Keep your wall performing like new for many years of service

Make your existing partitions look new with new fabric, vinyl or carpet

Sometimes it is just not worth repairing

Checklist of trouble signals & How to make emergency repairs

Problem	Possible Causes(s)	Treatment
Panels hanging out of alignment (not plumb or vertical)	Loose or broken trolleys, misaligned support beams	Tighten loose trolleys or replace broken trolleys, realign support beam
Panels sticking or hard to move	Dirt in track, misaligned track joints broken trolley	Clean track realign track joints replace broken trolley
Abnormal noise during panel movement	Misalign track joints, broken trolley	Realign track joints, replace broken trolley
Bottom seals will not operate	Automatic seals may have bent seal units or broken sprints, crank type seal may have stripped cranking mechanism or broken link between mechanism and seal	Straighten or replace bent seal units Replace other broken or stripped parts as necessary
Trolleys are broken or worn	Bad track joints, dirty track, abrasive handling of panels as track intersections	Realign bad track joints, clean track, replace broken trolleys and re-train setup staff
Lever closure jamb will not extend	Mechanism stripped limit cable or chain tangled	Replace stripped mechanism untangle/adjust limit cable or chain as necessary
Pass door(s) will not latch	Strike plane out of alignment stabilizing mechanism or foot-bolt not set	Realign strike plate, set foot-bolt or stabilizing mechanism and re-train setup staff.
Electrical issues		Call G&S your certified Hucor Rep.
Damaged Covering	Torn from heavy use or age	Recovering & Restoration



Contact Myron Ury or Jim Greffet at G&S

mury@golterman.com or jimg@golterman.com
3555 Scarlet Oak Blvd. • St. Louis, MO 63122
636-225-8800 • www.goltermansabo.com

Acoustical Wall & Ceiling Systems • Window Treatment • Stretch Walls & Ceilings • Glass Markerboards
Visual Display Boards • Sound Control Doors & Windows • Wood Acoustical Wall & Ceiling Systems
Draperies & Drapery Hardware • Custom Upholstered Seating

Profile of Products



Acoustical Wall & Ceiling System
Golterman & Sabo



Foam Acoustical Wall & Ceiling System
Pinta Acoustic



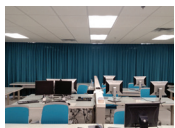
Wood Acoustical Wall & Ceiling System
ASi



Stretch Wall & Ceiling System
FabricWall, New Mat, Clipso



Window Treatment
MechoShade, Lutron, Draper, SWF Contract



Draperies and Drapery Hardware
Kirsch, BTX, SWF Contract



Custom Upholstered Seating
Golterman & Sabo



Cubicle Curtain & I.V. Track
A.R. Nelson Co. (ARNCO)



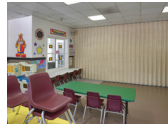
Coiled Wire Fabric Systems
Cascade Architectural



Acoustical Enclosures, Test Rooms, Sound Barrier Walls, & Music Practice Rooms
Industrial Acoustics Co., Sound Seal



Operable Glass Walls & Partitions
Kwik-Wall



Accordion Doors
Kwik-Wall



Sound Control Doors & Windows
Industrial Acoustics Co.



Visual Display Boards
Claridge



Glass Markerboards
Claridge, Clarus



Display/Bulletin Cases
Claridge



Theatre and Stage Equipment
Golterman & Sabo



Projection Screens
Da-Lite, Draper



Wall Protection Systems
Pawling Corporation



Entrance Mats
Pawling Corporation

All manufacturers are linked to our website. Complete design manuals are available for any of these products.
Please call if you need further information.

3555 Scarlet Oak Blvd. • St. Louis, MO 63122
636.225.8800 • 800.781.2036 • Fax: 636.225.2020 • www.goltermansabo.com