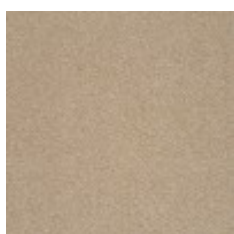
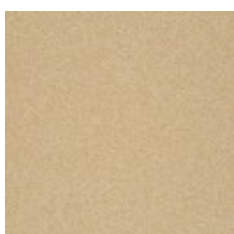


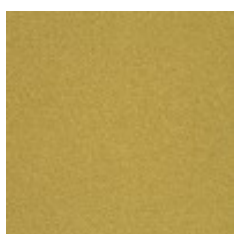
Use	Upholstery, Panel Fabrics
Content	15% Polyester, 85% Polyester (Postconsumer Recycled)
Finish	Nanotechnology Stain Resistant
Cleaning	Water-based/Solvent (WS)
Weight	25 ounces/linear yard
Width	54 inches (137 cm)
Shown Railroaded	No
Flammability	ASTM E 84 Unadhered Class A, CA TB 117-2013
Abrasion	400,000 Wyzenbeek double rubs (CD)
Lightfastness	40 hours
ACT	
Material Chemistry	No Flame Retardants
Sustainable Logistics	Ships Carbon Neutral
Warranty	5 years
Origin	United States



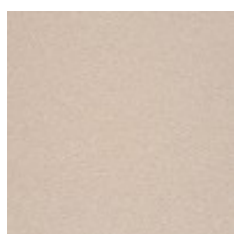
Sandstone
3973-101



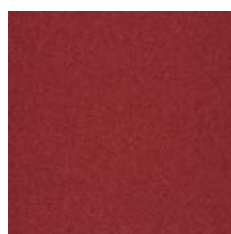
Wheat
3973-201



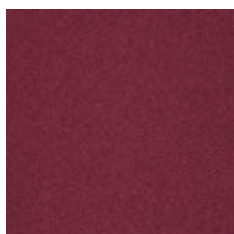
Canary
3973-202



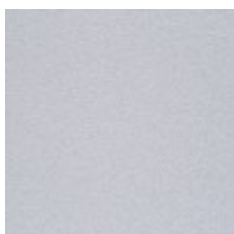
Quartz
3973-301



Tomato
3973-302



Beet
3973-303



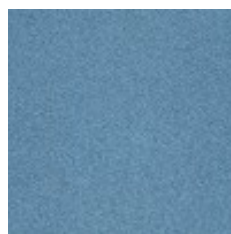
Mist
3973-401



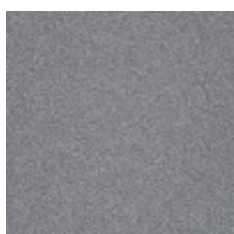
Spray
3973-402



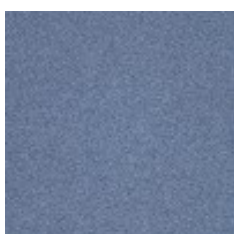
Sky
3973-403



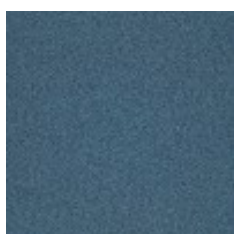
Pool
3973-404



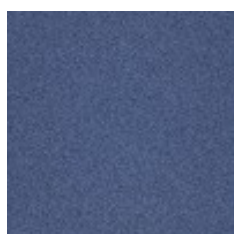
Bluestone
3973-405



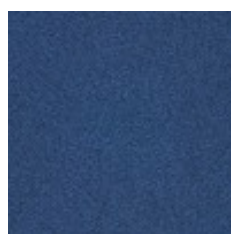
Denim
3973-406



Sea
3973-407



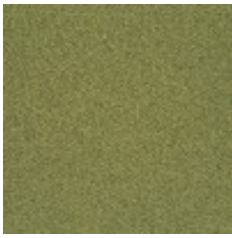
Delft
3973-408



Cadet
3973-409



ARCHITECTURAL PRODUCTS
Golterman & Sabo
goltermansabo.com



Avocado
3973-501



Field
3973-502



Sage
3973-503



Pink Salt
3973-701



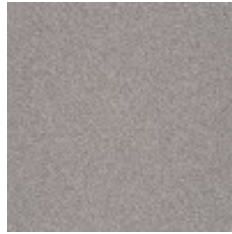
Red Rock
3973-702



Gull
3973-801



Tin
3973-802



Mica
3973-803



Osprey
3973-804



Charcoal
3973-805