
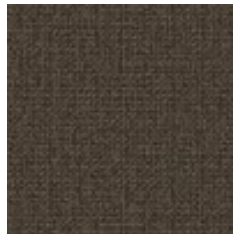


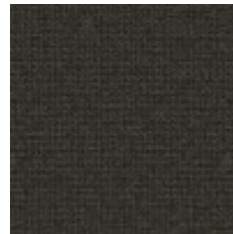
Use Upholstery, Panel Fabrics
 Content 100% Polyester (Postconsumer Recycled)
 Finish Silicone (Supreen)
 Backing Fluid Barrier (Supreen)
 Cleaning Bleach (10:1), Water-based/Solvent (WS)
 Weight 21.5 ounces/linear yard
 Width 54 inches (137 cm)
 Flammability ASTM E 84 Unadhered Class A, CA TB 117-2013
 Abrasion 100,000 Wyzenbeek double rubs (CD)
 Lightfastness 40 hours
 ACT 
 LEED Recycled Content
 Sustainable Logistics Ships Carbon Neutral
 Warranty 5 years



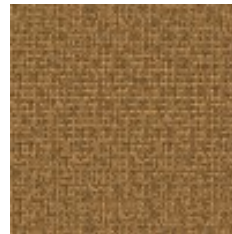
Travertine
3169-101



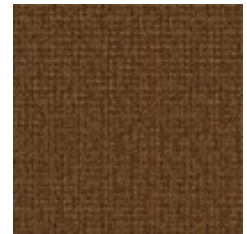
Dovetail
3169-102



Ore
3169-103



Farro
3169-201



Earthen
3169-202



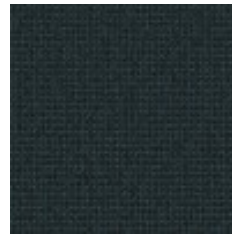
Heat
3169-301



Patina
3169-401



Canal
3169-402



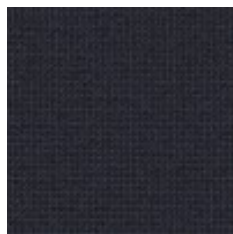
Oceanside
3169-403



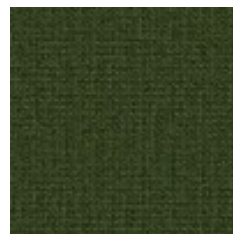
Flaxflower
3169-404



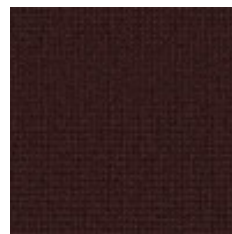
Inkwell
3169-405



Indigo
3169-406



Topiary
3169-501



Blackberry
3169-601



Eggplant
3169-602



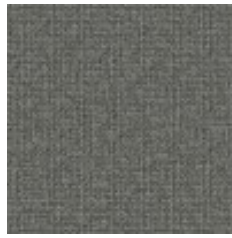
ARCHITECTURAL PRODUCTS
Golterman & Sabo
 goltermansabo.com



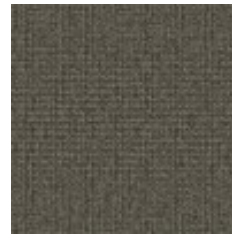
Autumnal
3169-701



Silverpoint
3169-801



Acier
3169-802



Slate
3169-803



Granite
3169-804